



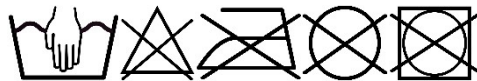
NYLMA®

Mura, 32 - 08227 Terrassa (Barcelona) - Spain
Tel. +34 937 36 31 60 - mnylma@nylma.com

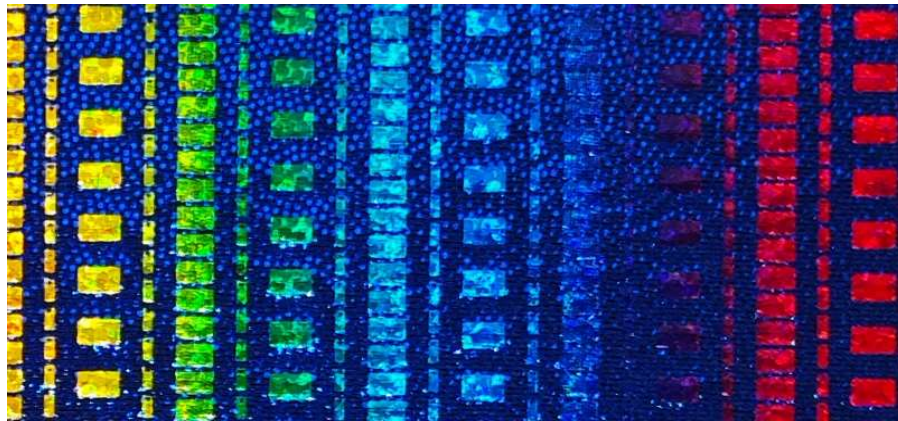


SH-6969 - 886

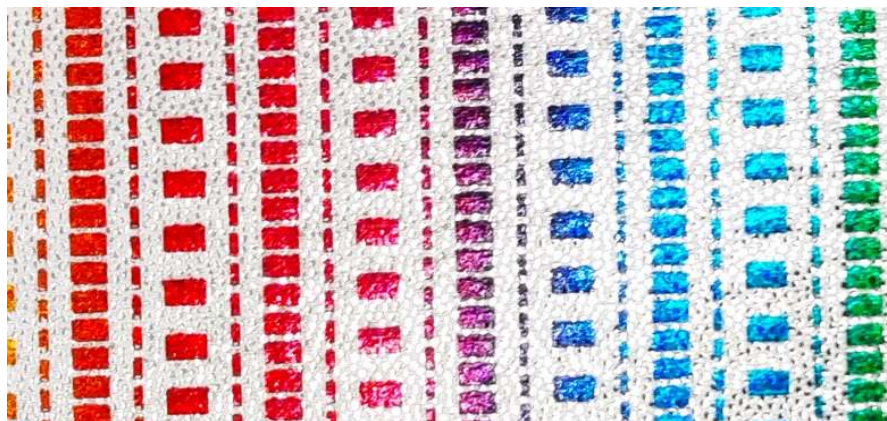
Composición / Composition	Peso / Weight	Ancho / Width	Metraje / Rolls
80% Polyamide 20% Elastomere	185 gr/m2	145 cm	50 mts



300



506



999