



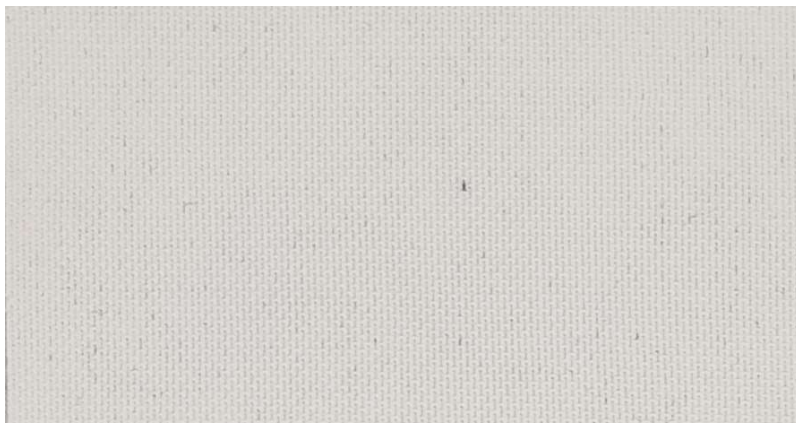
NYLMA®

Mura, 32 - 08227 Terrassa (Barcelona) - Spain  
Tel. +34 937 36 31 60 - mnylma@nylma.com



## TUL CAMBRIDGE - 901

Composición / Composition	Peso / Weight	Ancho / Width	Metraje / Rolls
90% Polyester 10% Elastomere	85 gr/m2	145 cm	50 mts



100



858



900